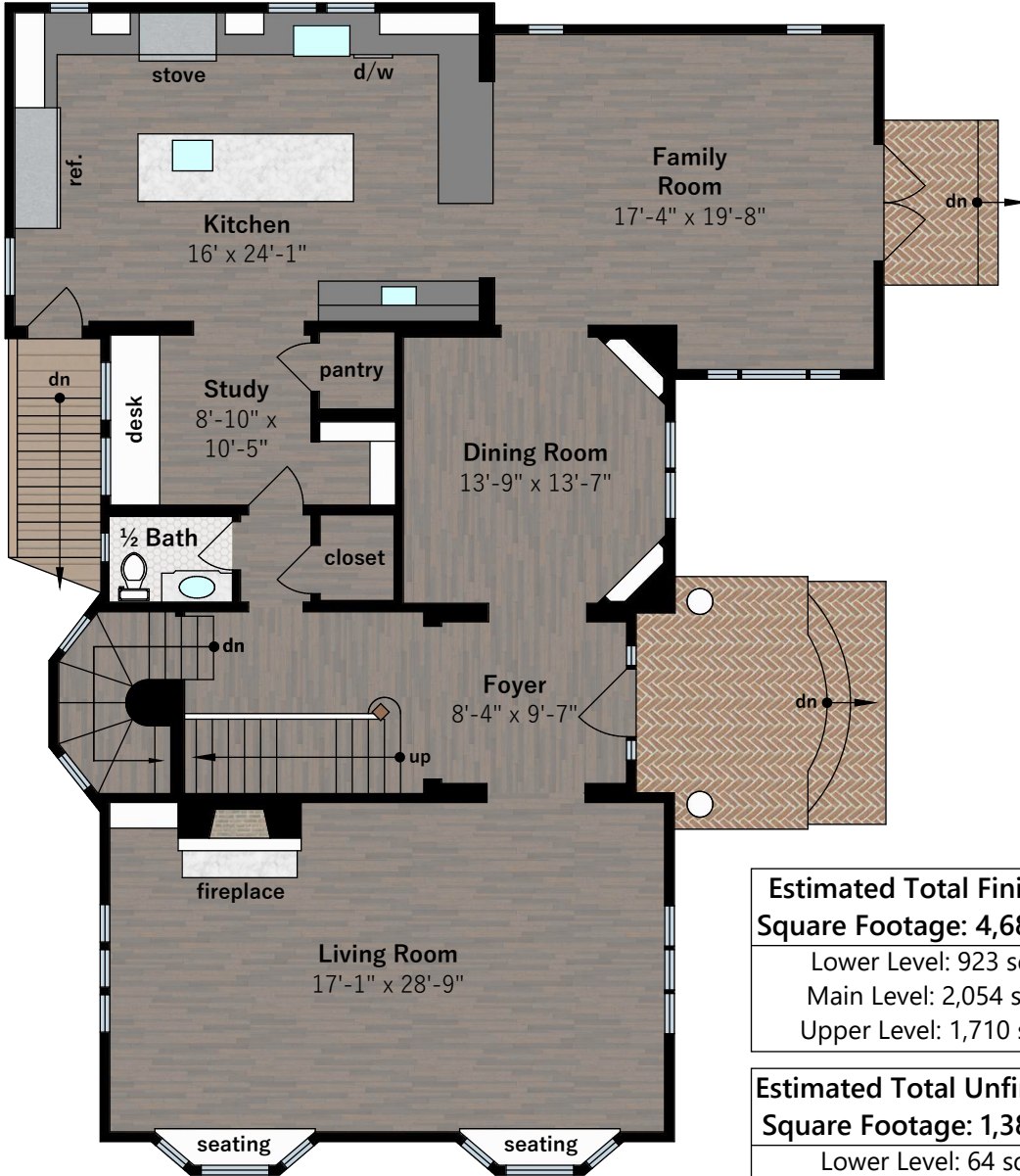


Interior room dimensions are shown, and all square footage measured from perimeter of exterior walls. Decks, porches, and patios are not included in calculations.  
 Measured on May 12th, 2023

# 212 Bonita Avenue

Piedmont, CA 94611



**Main Level**  
 approx. 2,054 sqft



**Upper Level**  
 approx. 1,710 sqft

**Estimated Total Finished Square Footage: 4,687 sqft**  
 Lower Level: 923 sqft  
 Main Level: 2,054 sqft  
 Upper Level: 1,710 sqft

**Estimated Total Unfinished Square Footage: 1,389 sqft**  
 Lower Level: 64 sqft  
 Garage: 699 sqft  
 Attic: 626 sqft

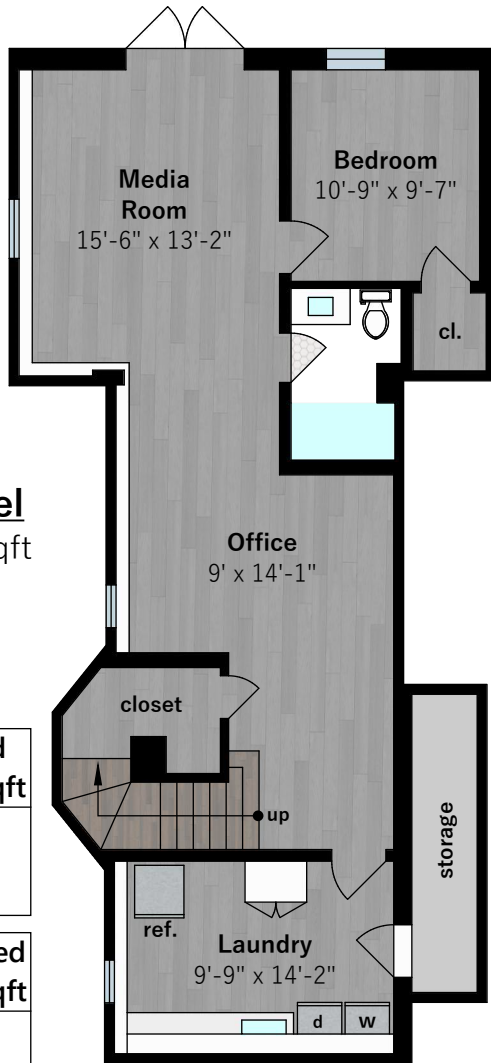
Any and all information on this drawing is for illustrative purposes only and is deemed reliable, but not guaranteed. All information requires independent verification.



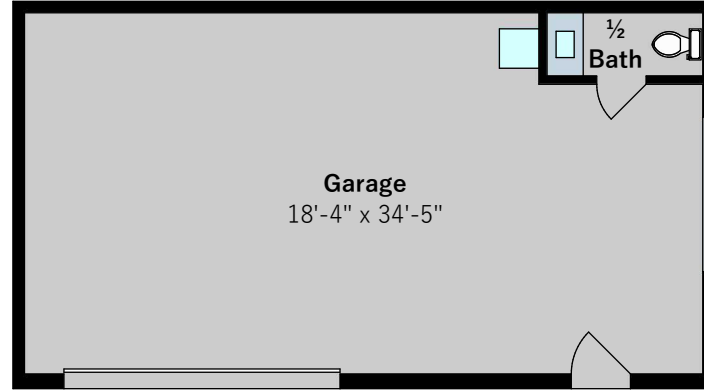
Interior room dimensions are shown, and all square footage measured from perimeter of exterior walls. Decks, porches, and patios are not included in calculations.  
 Measured on May 12th, 2023

# 212 Bonita Avenue

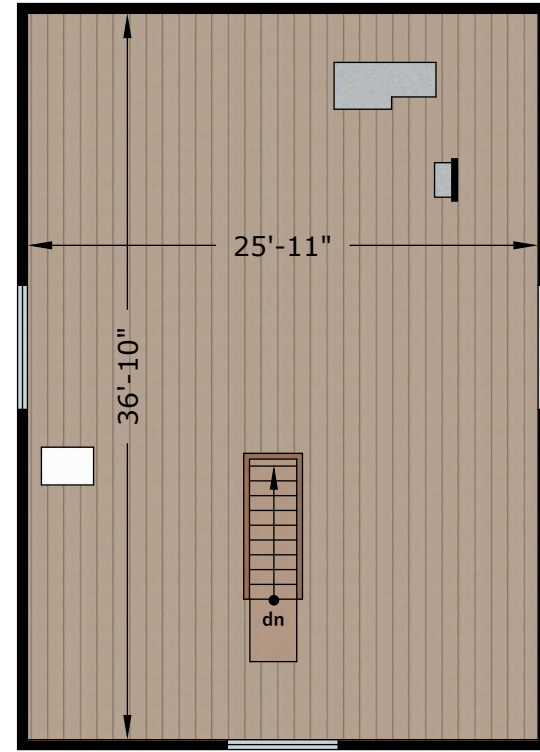
Piedmont, CA 94611



**Lower Level**  
 approx. 987 sqft



**Garage**  
 approx. 699 sqft



**Attic**  
 approx. 626 sqft

**Estimated Total Finished Square Footage: 4,687 sqft**

Lower Level: 923 sqft  
 Main Level: 2,054 sqft  
 Upper Level: 1,710 sqft

**Estimated Total Unfinished Square Footage: 1,389 sqft**

Lower Level: 64 sqft  
 Garage: 699 sqft  
 Attic: 626 sqft

Any and all information on this drawing is for illustrative purposes only and is deemed reliable, but not guaranteed. All information requires independent verification.

